

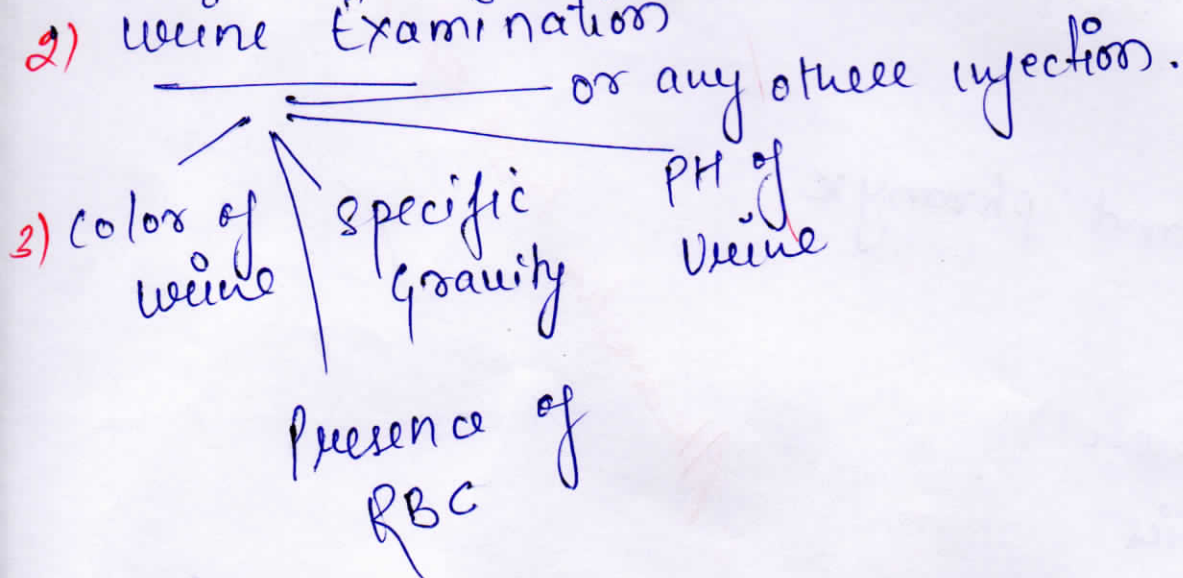
UNIT-2

General clinical Investigation

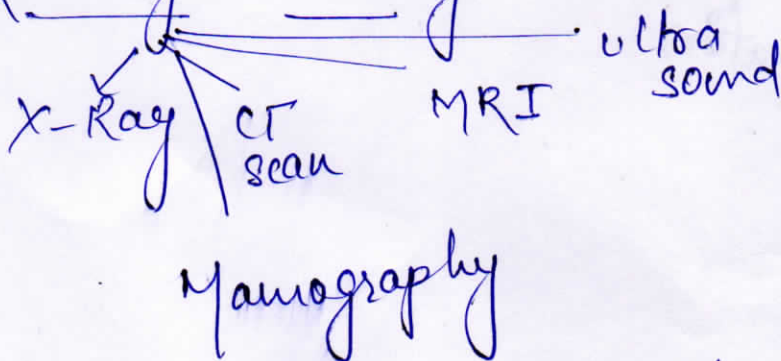
1) Complete Blood Count (CBC)



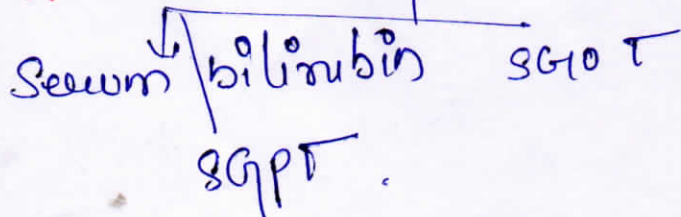
2) Urine Examination



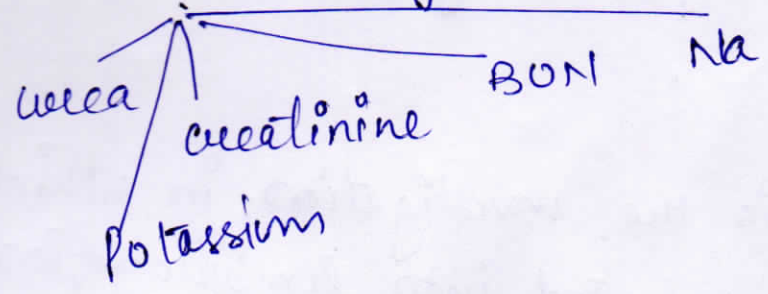
4) Radiological study



5) LFT - Liver function test



KFT → kidney function test



Endoscopy → Direct visualisation of internal organs through an endoscope are called endoscopy.

Autoscopy → visualization of ear.

Laryngoscopy → visualization of larynx

Bronchoscopy → Visualization of Bronchioles

Colonoscopy → visualization of colon

Cystoscopy → Visualization of urinary bladder

Laproscopy → visualization of organ through abdominal wall.

Biopsy → Removal of tissue or fluid for diagnostic Purpose.

Thoracentesis → Removal of pleural fluid and air from the chest wall by inserting needle into the Pleural space.

Abdominal paracentesis :→ Removal of fluid from
Peritoneum cavity.

Lumbar puncture :- It is the investigation in which
the lumbar needle is inserted into lumbar region
of the spine and withdraw the cerebrospinal fluid

ECG → Is a investigation to find out the electrical
activity of heart.

Terminology

Ostomy → Means opening.

Tracheostomy - opening in trachea.

Colostomy - opening of colon.

Iliostomy - opening in ileum

Ectomy - Means Removal.

Hysterectomy - Removal of uterus

Appendectomy - Removal of Appendix.

Rappy - Repair / sutures

Pexineorappy → Repair of pexineum.

Plasty - Repair

Tympanoplasty - Repair tympanic membrane

otomy - Cutting

lysis - Breakdown

Cleidotomy - cutting of clavicle

Abdominal Regions

Rt. Hypochondriac Region	Epigastric Region	Left Hypochondriac Region
Rt. Lumbar	Umbilicus Region	Lt Lumbar Region.
Right iliac fossa	Hypogastric	Lt. iliac fossa

Neurological Assessment

Parameter	Finding	Score
1. <u>Eye opening</u>	Spontaneous	4
	To speech	3
	To pain	2
	No Response	1
<u>2. Verbal Response</u>	Oriented	5
	Confused	4
	In appropriate	3
	In Comprehensive	2
	No response	1
<u>3. Motor Response</u>	ObeY Command	5
	localised pain	4
	Withdraw	3
	flexion, Extension	2
	No response	1

The score is

11 to 15 is conscious
7 to 10 is semiconscious
5 to 6 Comma

< 5 Unconscious patient.